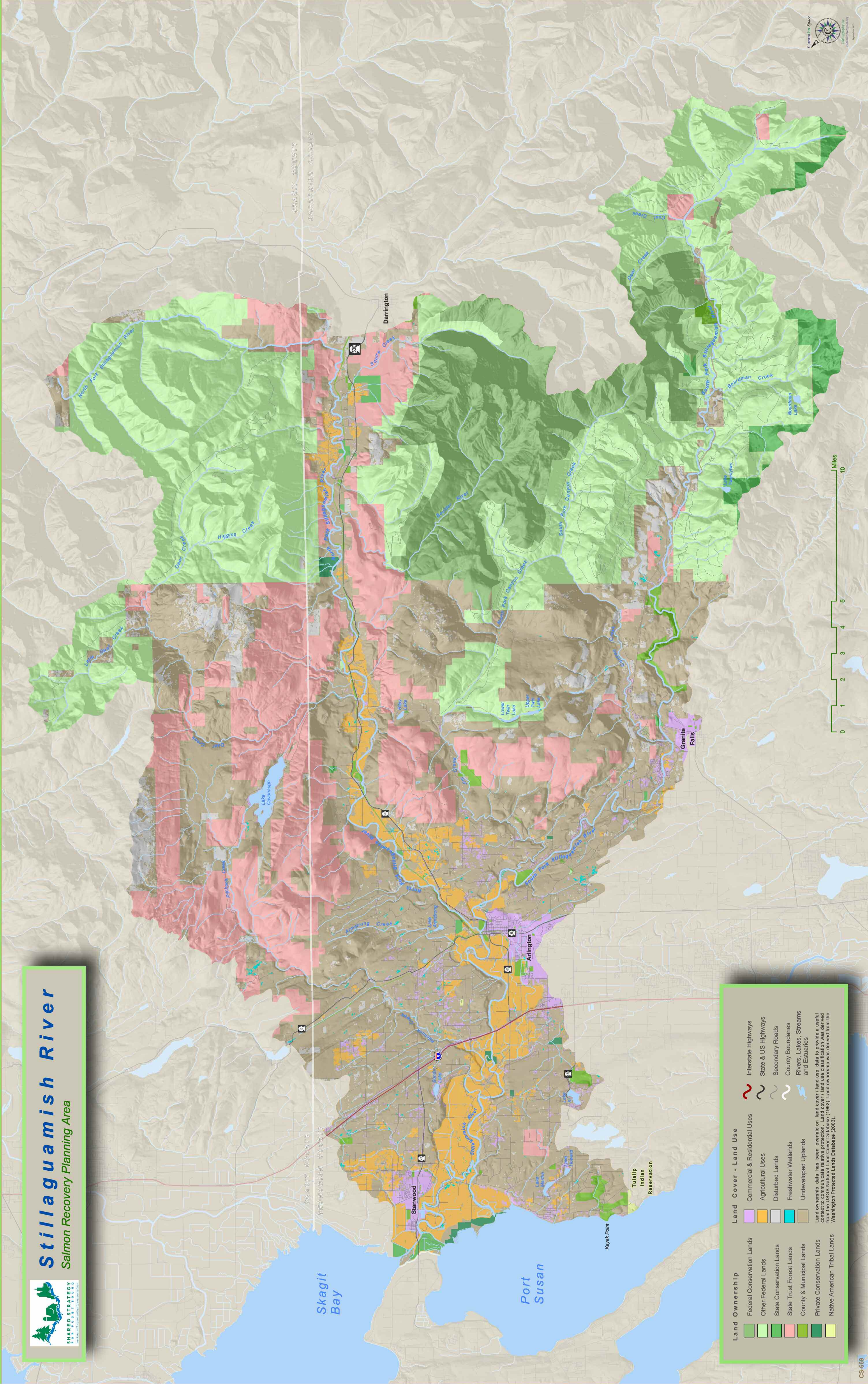




Stillaguamish River

Salmon Recovery Planning Area



- | Land Ownership | Land Cover - Land Use |
|------------------------------|--------------------------------------|
| Federal Conservation Lands | Interstate Highways |
| Other Federal Lands | State & US Highways |
| State Conservation Lands | Agricultural Uses |
| State Trust Forest Lands | Disturbed Lands |
| County & Municipal Lands | Freshwater Wetlands |
| Private Conservation Lands | Rivers, Lakes, Streams and Estuaries |
| Native American Tribal Lands | County Boundaries |
| | Rivers, Lakes, Streams and Estuaries |
- Land ownership data has been overlaid on land cover/land use data to provide a useful context to communicate relative protection. Land cover/land use classification was derived from the Washington Protected Lands Database (1992). Land ownership was derived from the Washington Protected Lands Database (2003).

